

Extreme AirDefense® Mobile

Ensure the Reliability and Health of Your WLAN

BENEFITS

- Convenient 802.11 a/b/g/n WLAN design and site assessment tools
- Conduct quick and accurate scans of the network to ensure the health of your wireless LAN
- Diagnose and proactively close security holes as part of a WLAN compliance policy



Product Overview

Ever have trouble pinpointing the exact location of a rogue device on your network? Ever investigate reports of a wireless problem in a specific area, only to find the network working fine when you get there? You likely deal with these types of WLAN management issues every day, because the performance of your network has become so crucial to improving your business operations. To help, we've enhanced our laptop-based wireless diagnostic tool, Extreme AirDefense Mobile. With distinct functions that provide visibility into your wireless network, the two modules that make up the comprehensive tool are designed to be used together, but can also be leveraged separately when needed.

The SiteSurvey module gives you an easy-to-use tool for designing and verifying Wi-Fi coverage. With its map-based interface, you can quickly collect data and detect weak spots or overlaps in your 802.11 a/b/g/n networks. This enables you to deploy new networks or troubleshoot existing networks easily and effectively.

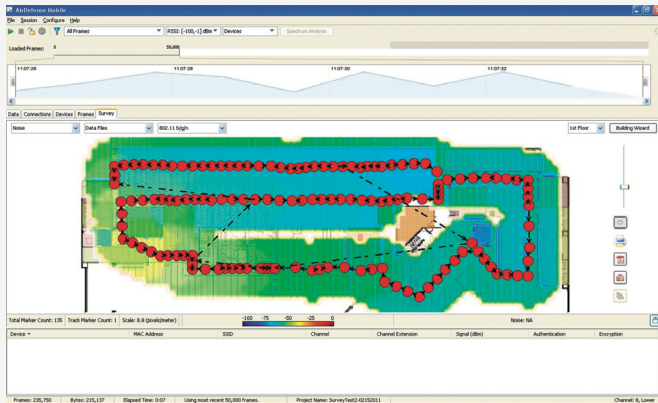
The WLAN Analyzer module provides analysis tools that give you visibility into the 802.11 protocol and higher-level graphical analysis of devices and traffic patterns, so you can proactively identify and close security holes to ensure regulatory compliance, analyze traffic in real time, and review usage and performance patterns. The WLAN Analyzer also provides you with a simplified way to locate and inventory your wireless devices.

With this powerful combination of design, measurement, and diagnostic tools, the AirDefense Mobile solution simplifies the management of your wireless LAN.

SiteSurvey Module

FUNCTIONALITY

- WLAN design by survey and installation verification
- Coverage visualizations and application analysis
- Network performance validation
- Map-based interface detection
- Multi-vendor support
- Integration with AirDefense Services Platform



SiteSurvey provides a mapped layout of signal coverage, so you can see at a glance the impact of neighboring networks in local environments.

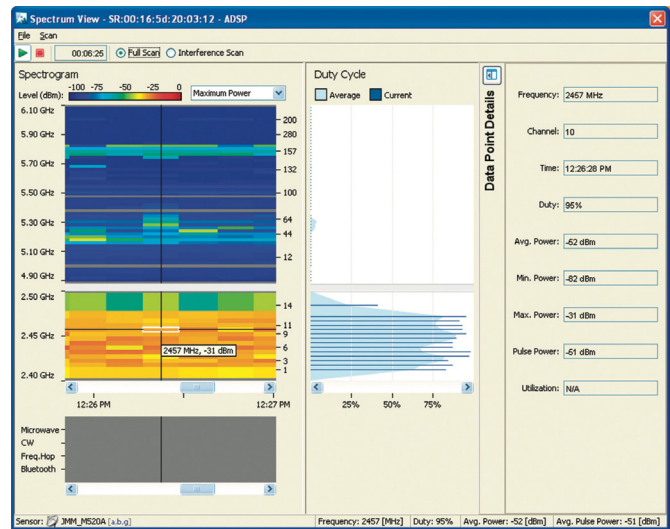
PERFORM WLAN SITE SURVEYS WITH NETWORK COVERAGE VISUALIZATION

With a map-based interface for quick and easy data collection, the SiteSurvey module allows you to verify network coverage, noise, AP channel assignments, and the impact of neighboring networks in local environments. Simply import image files or formatted drawings from the AirDefense Services Platform to orient data collection and you are ready to start your wireless scan. With a simple point and click, you can identify your location within the map, while the SiteSurvey tool collects the network's vital statistics. The statistics are then fed into a sophisticated RF propagation engine to provide you with a mapped layout of signal coverage. Use this feature to analyze metrics that affect the performance of specific wireless applications such as VoIP or video streaming. All visualizations can be viewed on a per access point, per channel, per standard, or per network basis and can be exported as professional reports.

WLAN Analyzer Module

FUNCTIONALITY

- Locate rogue devices
- Device discovery and inventory
- Live traffic analysis and real-time measurements
- Capture file playback for analysis and reporting
- Wireless network usage statistics and health analysis
- Identify and classify interference sources
- Reporting capabilities
- Multi-vendor support
- Integration with AirDefense Services Platform



WLAN Analyzer includes a spectrum analyzer that makes it easy to identify and classify possible sources of interference.

ANALYZE DATA IN REAL TIME

The Live View feature lets you analyze and troubleshoot issues affecting your wireless network. With Live View, you can drill down into a live, streaming view of devices, access point IDs, and channels, allowing you to review the working details of frame captures, authentication errors, AP configuration issues, and network interference. With the built-in connection diagrams, you can see visualizations of Layer-2 802.11 connectivity. Smart frame captures allow you to save and store only the data needed.

You can also review and troubleshoot saved captures directly through the system, eliminating the need for investment in additional tools.

AirDefense Mobile also features user-definable views for focusing on actionable data, allowing you to pinpoint problems faster. With a variety of easy-to-analyze graphs and charts, AirDefense Mobile helps you be more productive, more proactive, and more effective in maintaining your network's health.

IDENTIFY INTERFERENCE SOURCES

The AirDefense Mobile solution includes a spectrum analyzer that allows you to identify and classify possible sources of interference. With real-time spectrograms, you can easily identify possible issues and immediately take necessary steps to improve wireless performance. Trouble with elusive, intermittent interference from Bluetooth® devices, wireless security cameras, or even microwave ovens? AirDefense Mobile not only helps you identify them, it actually lets you see the impact they have on your network, so you can proactively address performance issues before your critical wireless applications are affected.

Integrated Monitoring with the AirDefense Services Platform

AirDefense Mobile is a complementary solution to the AirDefense Services Platform. Cross-integration allows synchronization of a number of configuration settings such as identifying trusted and/or neighboring Wi-Fi devices to expedite site surveys and troubleshooting. It has an intuitive user interface that, when used along with the AirDefense Services Platform, provides a comprehensive view of wireless network activity.

Extreme Networks delivers both an unrivaled indoor/outdoor wireless portfolio and the software tools you need to build and operate a trusted high-performance wireless network. AirDefense Solutions reflect our holistic approach to network design, management, security, and network assurance.

Contact Us

To learn more about how AirDefense Mobile can help you ensure the health and reliability of your WLAN by simplifying its management, please visit us at www.extremenetworks.com/wms.

Specifications

PRODUCT FEATURES	
AIRDEFENSE MOBILE SPECIFICATIONS	
Running on a Windows XP or Windows 7 operating system AirDefense Mobile installs on a laptop with a supported 802.11 a/b/g/n wireless adapter. Coverage range is dependent on adapter.	
SUPPORTED 802.11 WIRELESS CARDS	
PCMCIA card adapters	Cisco 802.11 a/b/g Cardbus Wireless - Windows XP/Vista only LAN Client Adapter CB21AG-A-K9 Netgear WAG511 v1 or v2 Linksys® WPC55AG (v1.0, v1.1, v1.2, or v1.3) Ubiquiti Networks SRC CACE Technologies AirPcap N a/b/g/n Cardbus AirMagnet® C1060 a/b/g/n Cardbus Adapter
PCI-Express adapters (with Atheros 5006EX chip set)	Lenovo P/N 40Y7026 Mini PCI-Express Adapter Ubiquiti SRX (SuperRange Xpress) PCI-Express Card
USB	Proxim ORiNOCO 8494 USB a/b/g/n Adapter Ubiquiti SR71 USB a/b/g/n Adapter
SYSTEM REQUIREMENTS	
<ul style="list-style-type: none"> Intel® Pentium® IV processor or later, 2 GHz 2 GB RAM 	<ul style="list-style-type: none"> Windows XP SP3 (32 bit), Windows Vista (32 bit), Windows 7 (32 or 64 bit) 400 MB hard disk space for installation



<http://www.extremenetworks.com/contact> / Phone +1-408-579-2800

©2016 Extreme Networks, Inc. All rights reserved. Extreme Networks and the Extreme Networks logo are trademarks or registered trademarks of Extreme Networks, Inc. in the United States and/or other countries. All other names are the property of their respective owners. For additional information on Extreme Networks Trademarks please see <http://www.extremenetworks.com/company/legal/trademarks>. Specifications and product availability are subject to change without notice. 11371-1216-13